



DIGITHA

Digital entry panels

The Thangram range is completed by Digitha, a stainless steel entry panel that is particularly sturdy and highly functional. With Bpt's focus on making the best possible use of internal and external space, as well as the numerous features made possible by the digital pushbutton panel, Digitha offers unparalleled performance and ultra-compact design, and the sophisticated XIP digital control system is the ideal solution for residential systems.

Attractive and elegant, Digitha is pleasing to the senses, with a dual finish – brushed and matt – that will delight both the eye and the touch.

Digitha: the new generation of entry panels.

VERSIONS



Audio version



Video version



XIP
internet protocol

CAME  **BPT**

TECHNICAL CHARACTERISTICS

Plus

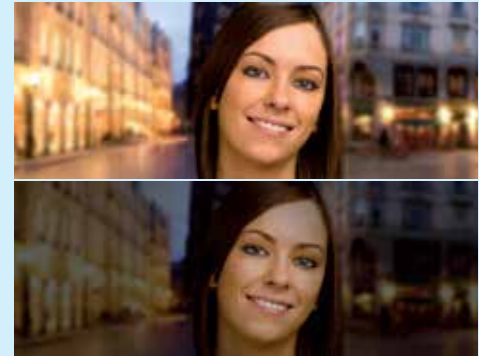
Elegance and discretion

Robust construction and a complete range of functions, without sacrificing attractive styling. With its dual brushed/matt finish and compact size, Digitha will blend perfectly into any architectural setting.



Superb video quality, day and night

The entry panels in the Digitha range feature cutting-edge technology in the form of sensors that utilize sophisticated digital image processing algorithms to give superlative video quality in any ambient conditions. In addition, the light guide system, developed jointly with the Plast Optica Research Centre (a division of FIAT's research centre), guarantees perfect night-time illumination.



Vandal-resistant

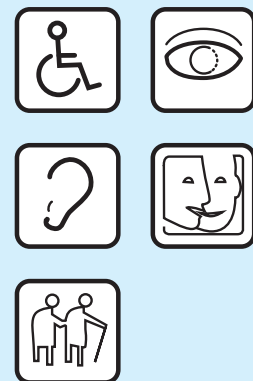
Digitha is a blend of stylish design and extra-robust construction thanks to a dual-finish electro-polished front panel in stainless steel (AISI 304). Available for wall-mounting or recessed installation, Digitha combines security, elegance and ease of installation in an entry panel with a full range of functions.



For the disabled and the elderly

Digitha entry panels comply with all legislative requirements concerning utilization by the disabled and the elderly. The wide angle of vision and digital zoom control make it possible to install Digitha at a height easily accessible to the disabled. The audio signal is processed to assure enhanced performance even in the noisiest areas, and the central button features a raised mark so that the buttons on the keypad can be readily identified by the sight-impaired.

The version with a Braille keypad, illuminated LEDs indicating the status of the system and large icons on the display panel, as well as the possibility of voice messaging, ensure that all the functions of Digitha can be used by persons with hearing and visual impediments.



	Call sent	Call in progress	Door open	System busy
LEDs	YES	YES	YES	YES
Symbols	YES	YES	YES	YES
Voice messages	YES	YES	YES	NO

COMPONENTS & ACCESSORIES

Entry panels



Digitha VR
video entry
system



Digitha VR
audio entry
system

Accessories for installation



Embedding box



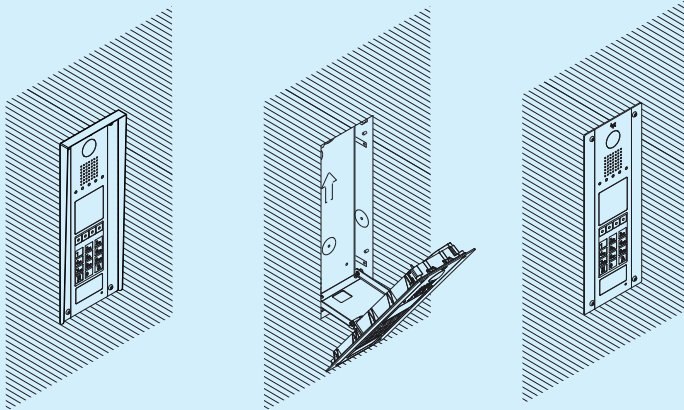
Frame with
raincover (only for
recessed version)



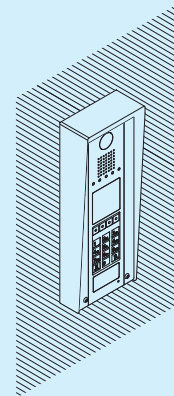
Wall-mount
support with
rain cover

INSTALLATION

Recessed

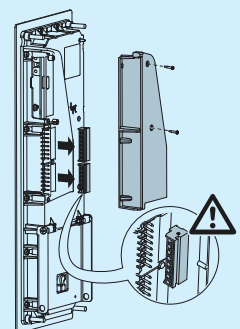


Wall-mounted



Simple, straightforward installation and wiring

Digitha can be recessed into a wall, protruding by just 2mm, or installed externally (thickness 42mm). For the recessed version, it is necessary to use the embedding box and frame with rain cover; for the externally-mounted version, the wall-mount support is already fitted with the rain cover. A choice of installation methods means that Digitha will blend beautifully into any architectural setting.



ITEM CODES

ENTRY PANELS

DDC/08 VR



Audio entry panel with front plate in stainless steel and dual-finish surface, circuit board for XIP system, RFID reader. LCD graphic display, 128x128 pixels, with white backlit screen, 4 function keys for navigating user commands and lists, alphanumeric keypad, 2 function keys for sending coded calls and access code confirmation, built-in proximity key reader. "Quick Start" programming of all parameters using on-screen guided menus. Mini USB connector for programming using the software tool. DIP-switches for adjustment of the line impedance. Local command for door lock, inputs for door lock release button, door status signalling devices, output connector for activation of external cameras. LEDs for visual control of the status of the system: red "call connected" LED, green "door open" LED, yellow "call in progress" LED, blue "system busy" LED. Protection rating IP54. Dimensions (WxHxD): 140x380x2 mm.

DDVC/08 VR



Colour video entry panel with front plate in AISI 304 stainless steel and dual-finish surface, circuit board for XIP system, RFID reader. NISTC/PAL camera, resolution 680x512 with built-in microprocessor for digital signal processing, horizontal angle of aperture 100° with digitally controlled zoom. Caller illumination using 4 high-efficiency LEDs. LCD graphic display, 128x128 pixels, with white backlit screen, 4 function keys for navigating user commands and lists, alphanumeric keypad, 2 function keys for sending coded calls and access code confirmation, built-in proximity key reader. "Quick Start" programming of all parameters using on-screen guided menus. Mini USB connector for programming using the software tool. DIP-switches for adjustment of the line impedance. Local command for door lock, inputs for door lock release button, door status signalling devices, output connector for activation of external cameras. LEDs for visual control of the status of the system: red "call connected" LED, green "door open" LED, yellow "call in progress" LED, blue "system busy" LED. Protection rating IP54. Dimensions (WxHxD): 140x380x2 mm.

ACCESSORIES FOR INSTALLATION

DDSI VR



Embedding box for Digitha entry panels in brushed stainless steel. With self-locking couplings and pre-formed push-out apertures for wiring conduits. Dimensions (WxHxD): 127x367x45 mm.

DDCI VR



Frame with rain cover for Digitha entry panels in brushed stainless steel. Only for recessed entry panels. Dimensions (WxHxD): 145x383x20 mm.

DDSP VR



Wall-mount box for Digitha entry panels in brushed stainless steel. With cable conduits, wall plugs and screws. Dimensions (WxHxD): 145x383x42 (body), x64 (frame) mm.